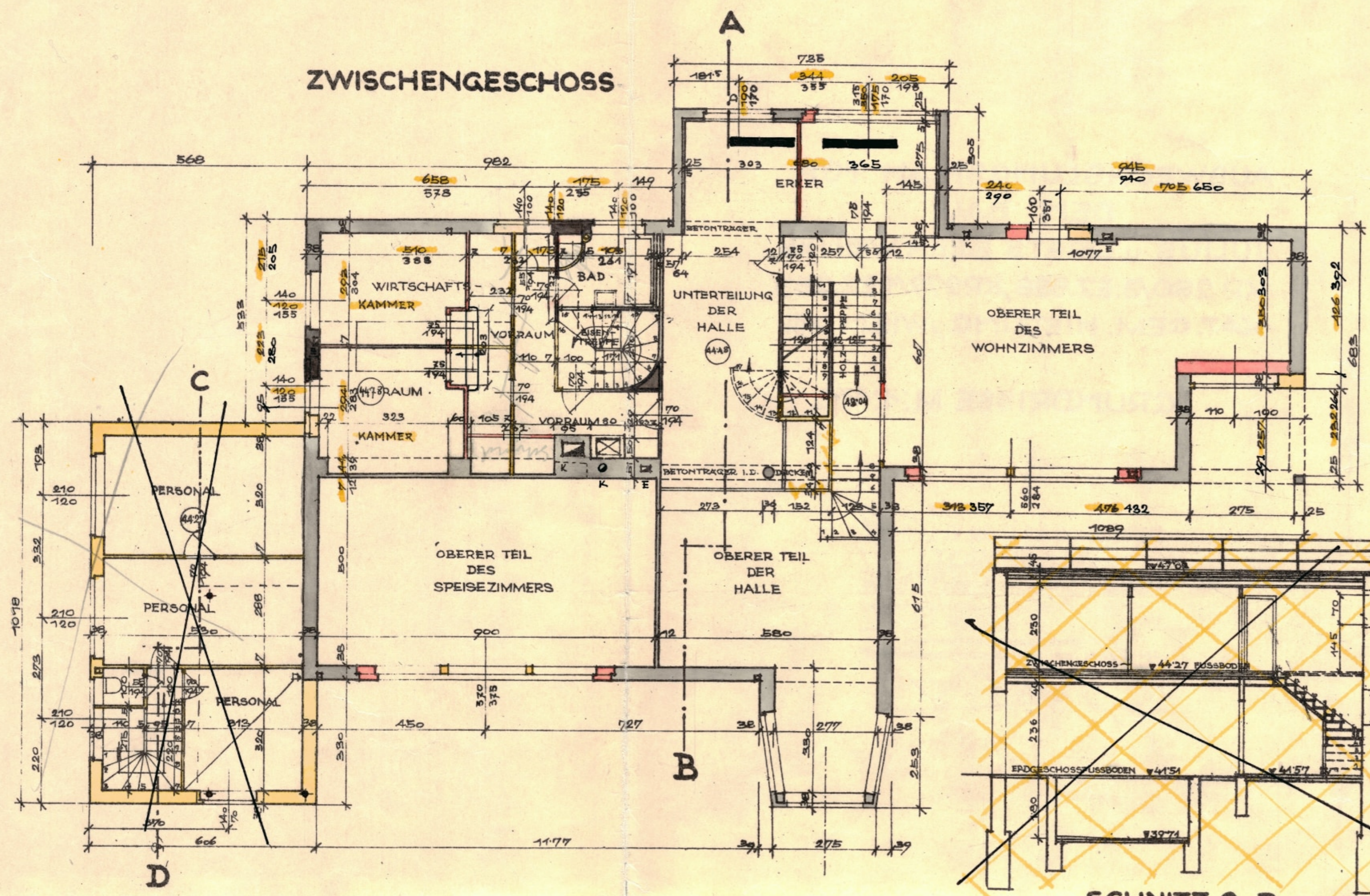
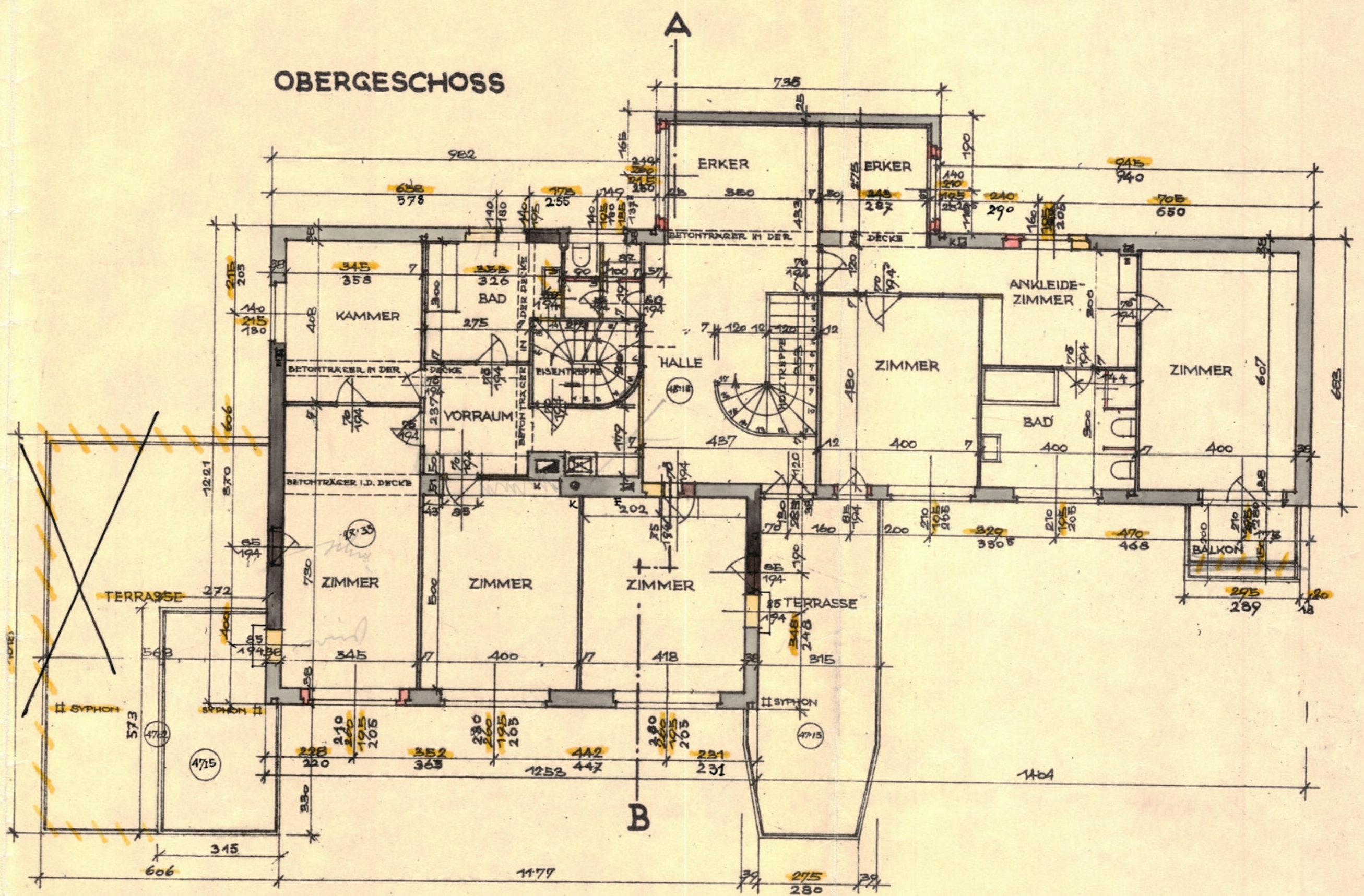


PLAN ZUR ERBAUUNG EINER VILLA FÜR HERRN JULIUS BEER UND FRAU MARGARETE BEER IN WIEN XIII. WENZGASSE  
AUF DEN KP. 280/3 EZ. 588, KP. 279/1 EZ. 253, KP. 291/11 EZ. 604, KP. 280/5 EZ. 588, KP. 296/26 EZ. 187.

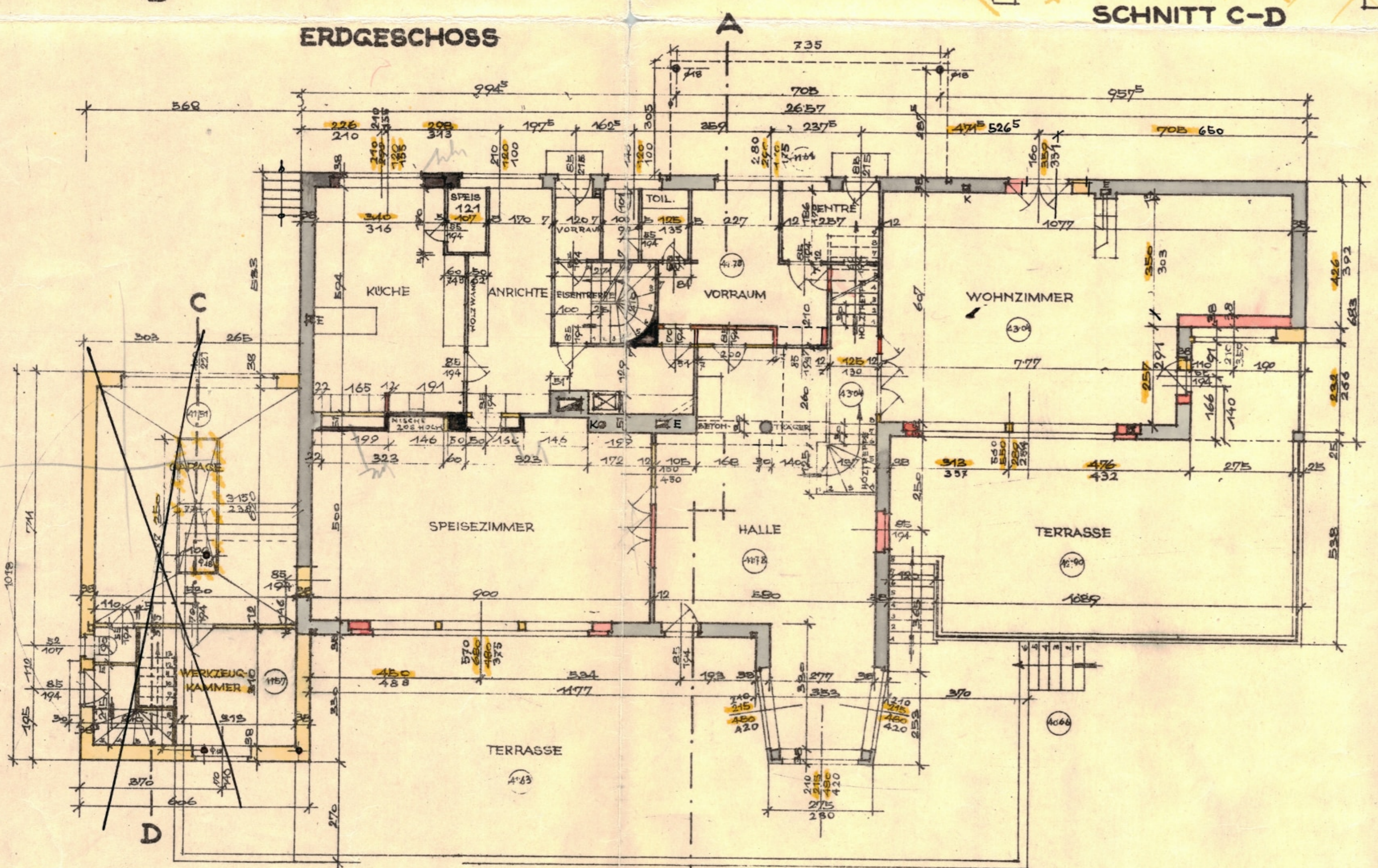
ZWISCHENGESCHOSS



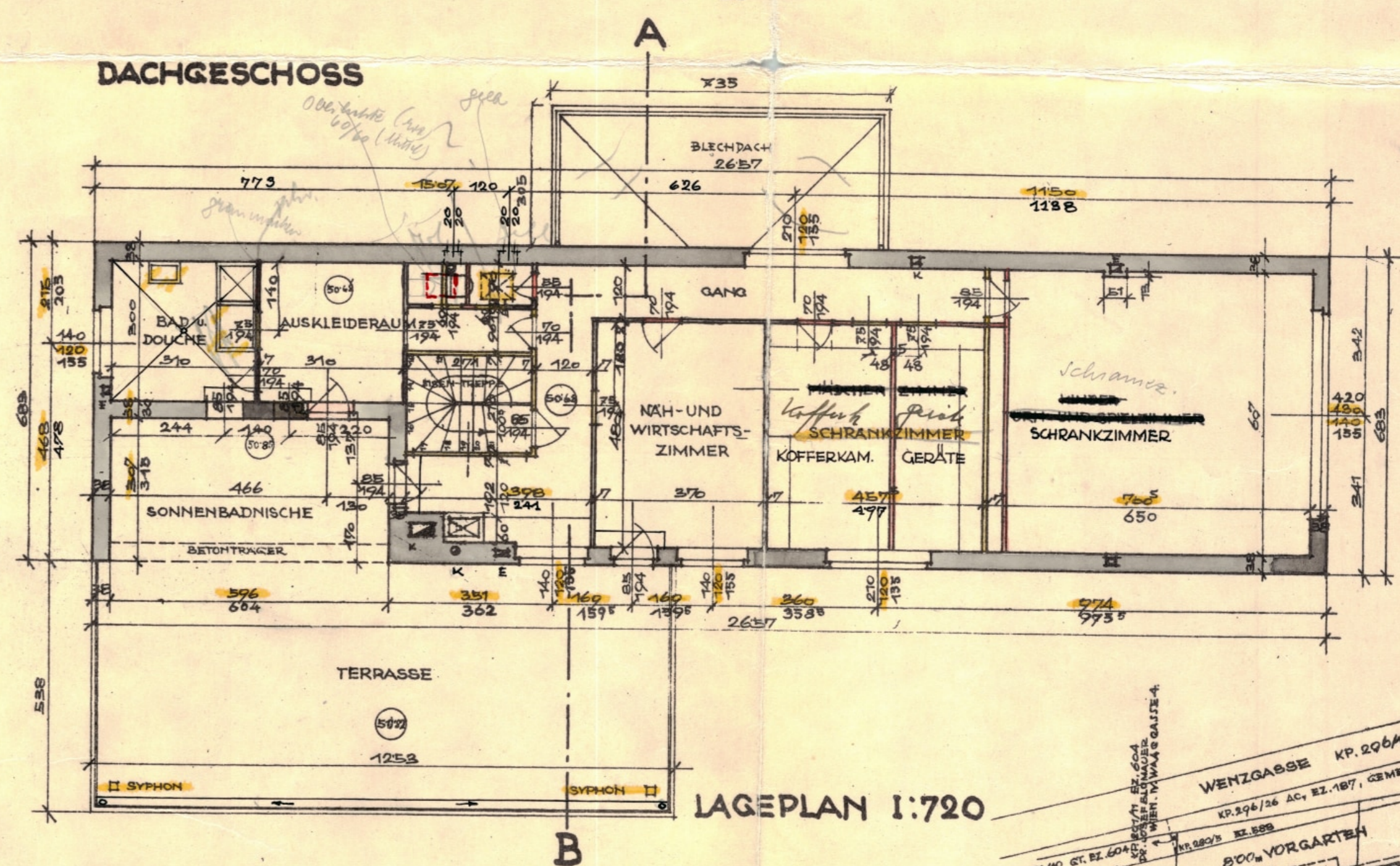
OBERGESCHOSS



ERDGESCHOSS

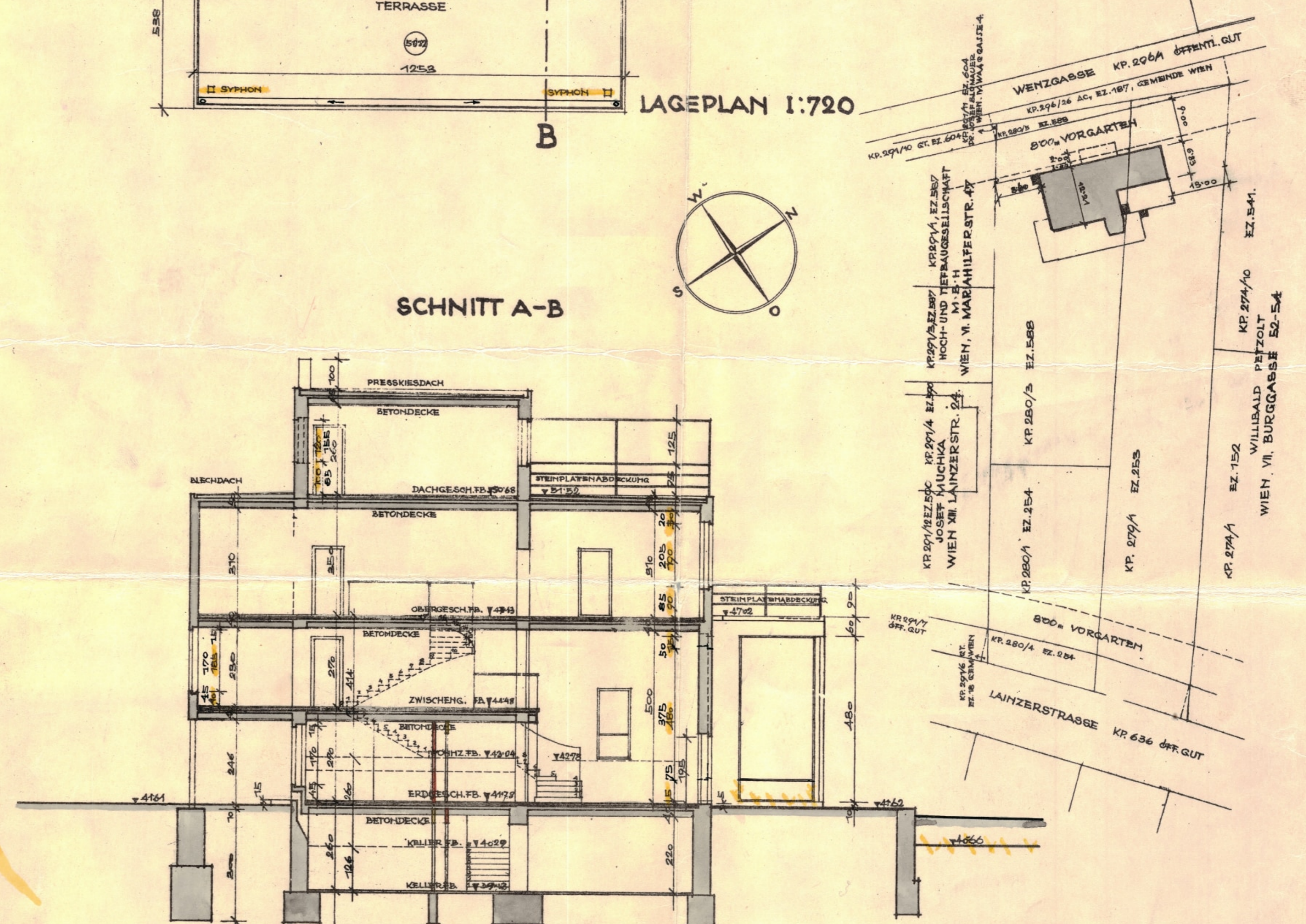


DACHGESCHOSS

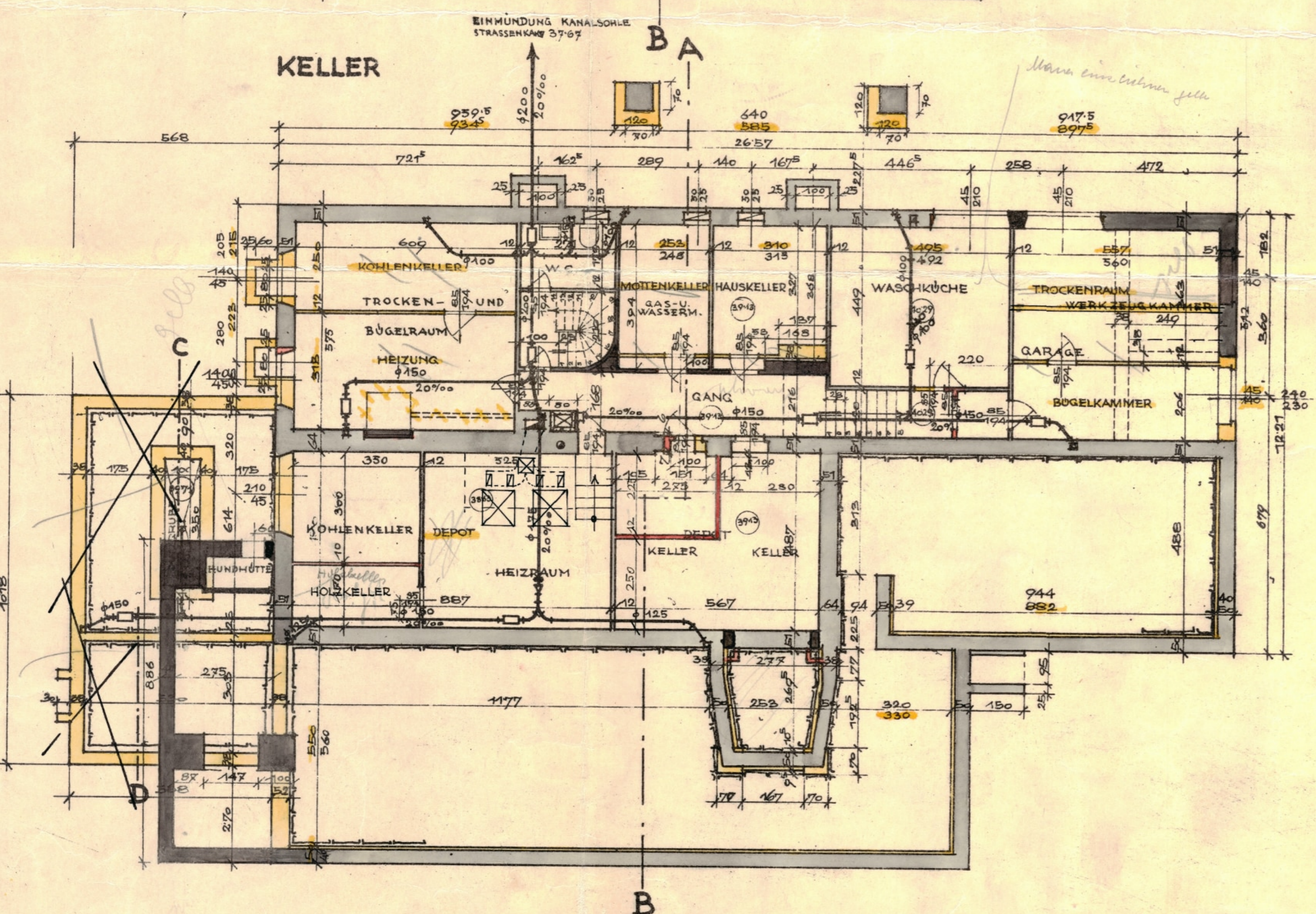


LAGEPLAN 1:720

SNITT A-B



KELLER



STADTBAUMEISTER  
EMANUEL UND ING. HANS  
KAMENICKY  
TEL. U 11-2-22 III., MARKTG. 40

*Kamenicky*

*Julius Beer Margarete Beer*